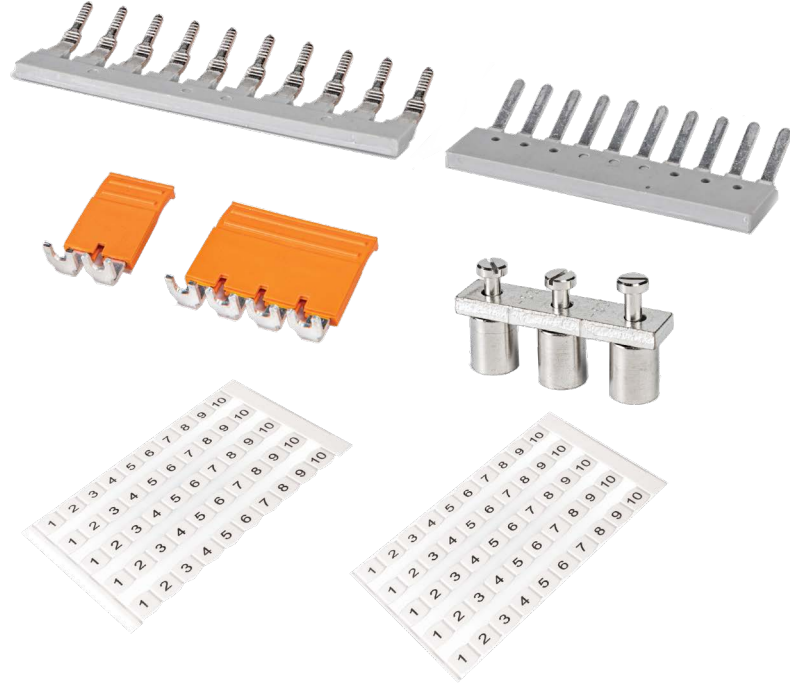


Terminal Block Accessories



- Marking system
- End Plates, Partitions, and Cover Base
- End Brackets
- Test Accessories
- Cross-Connection

Marking System

Marking Tags

The NS type Marking Tags

This type of labeling meets the advantage of easy and quick handling. The NS sheets consist of white polyamide with Laser engraving.

The sheets are labeled horizontally with maximum 3 characters, easy to read and high-contrast. The UV Laser technology engraving are completely wiping resistant. The NS sheets can be divided at any point and can be manually labeled with ease. Note that special engraving can be requested by customers. Samples of the NS sheets can be seen in the below picture.



■ NS 5

(width 5 mm)

RT/PG2.5 series
RT/SG2.5 series



■ NS 6

(width 6 mm)

RT/SU2.5 series
RT/SK2.5 series
RT/SG4 series
RT/PG4 series
RT/SS series



■ NS 6.4

(width 6.4 mm)

RT/SU4 series



■ NS 8

(width 8 mm)

RT/SU6 series
RT/PG6 series
RT/SG6 series
RT/SF series
RT/ST series



■ NS 10

(width 10 mm)

RT/SU10 ... 150 series
RT/SH series
RT/PG10, 16 series
RT/SG10 series
DSO series

Packing

The NS sheets are delivered in plastic bags and special box of 10 sheets=50 strips=500 single tags.

Marking Carriers Group



■ LB/1



Description	Type	Ordering No.	Qty.	Material	Dimensions (W/H/L)(mm)
Group marking carrier, for mounting on TH 35- 7.5, 15 width (mm)	LB/1 18.5	6020102001	50	PA	din rail 7.5 : 18.5/48/44.5 din rail 15 : 18.5/55.5/44.5



■ LB/2



Description	Type	Ordering No.	Qty.	Material	Dimensions (W/H/L)(mm)
Group marking carrier, for mounting on TH 35- 7.5, 15 width (mm)	LB/2 9.5	6020102002	50	PA	din rail 7.5 : 9.5/48/44.5 din rail 15 : 18.5/55.5/44.5



■ ELB/1



Description	Type	Ordering No.	Qty.	Material	Dimensions (W/H/L)(mm)
Group marking carrier, for mounting on EB/1, EB/3 width (mm)	ELB/1 9.5	6020102003	50	PA	9.5/22.5/43.5
Color (Color Code is the last 2 digits of the Ordering No.)		03		04	



■ ELB/4



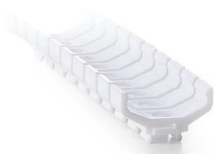
Description	Type	Ordering No.	Qty.	Material	Dimensions (W/H/L)(mm)
Group marking carrier, for mounting on EB/4 width (mm)	ELB/4 8	6020101010	50	PA	8/31/46

Marking Strip

The Marking Strip

There is a special accessory called the marking holder which is designed for products that don't have a specific place to set up the strip in their bodies. In these products, Marking holder can be easily set on the body and a strip can be mounted in the marking holder.

In the following table, you can find the list of products that the marking strip can be applied.



■ Marking Holder

Ordering No. : 6032100001

Screw terminal blocks:
RT/SU2.5 , RT/SU2.5-H , RT/SU4
RT/SU6 , RT/SU10
RT/SU16 , RT/SU25
RT/SU35 , RT/SU50 , RT/SU70
RT/SU95 , RT/SU150
RT/SU4-2L , RT/SU2.5/4-2L
RT/SU2.5/4-2L-L

RT/SH70 , RT/SH95
RT/SH150 , RT/SH240
RT/SK2.5 , RT/SU4-3L
RT/SK2.5-TS , DSO, DSO-LD
RT/ST6 , RT/ST6-L
RT/ST6-CMP , RSTP6

Accessories:
EB/1, EB/2, EB/3

End Plates, Partitions, and Cover Base



End Plate (EP)

In the last terminal of an assembled rail, the end plates should be used for safety and finger protection, especially when the terminal block has no insulated cover. In the below table, you can find the terminal blocks and their suitable end plates.

Type	Ordering No.	Application	Material	Qty.
EP-RTP2.5	6020202005	RT/SU2.5	PA	100
EP-RTP2.5H-10	6020202105	RT/SU2.5-H, RTSU4, RT/SU6, RT/SU10, RT/SK2.5-C, RT/SK2.5-CTS, RT/SK2.5-D, RT/SK2.5-R, RT/SK2.5-F, RT/SK2.5-FLD	PA	50
EP-RETN2.5-10	6020206001	RT/SU2.5-SO, RT/SU4-SO, RT/SU6-SO, RT/SU10-SO	PA	50
EP1-DRTP4	6020203002	RT/SU4-2L	PA	20
EP2-DRTP4	6020203003	RT/SU4-2L	PA	20
EP3-DRTP4	6020203004	RT/SU4-2L	PA	20
EP-DRTP2.5/4	6020203001	RT/SU2.5/4-2L, RT/SU2.5/4-2L-L	PA	20
EP-RT/SU10-2L	6020203020	RT/SU10-2L	PA	20
EP-RT/SU2.5 3L0E5	6020206002	RT/SU2.5-3L0E5	PA	20
EP-RSTT6	6020201003	RT/ST6-SHT, RT/ST6-SHT-L	PA	50
EP-RSTP6	6020201004	RSTP6	PA	50
EP-RSTN6	6020201006	RT/ST6-CMP	PA	50
EP-RT/SG2.5-10	6020206003	RT/SG2.5, RT/SG4, RT/SG6, RT/SG10	PA	50
EP-RT/SG2.5-10E	6020206004	RT/SG2.5-E, RT/SG4-E, RT/SG6-E, RT/SG10-E	PA	50
EP-RT/SG2.5-4 2L	6020203006	RT/SG2.5-2L, RT/SG4-2L, RT/SG2.5-2LE, RT/SG4-2LE	PA	20
EP-RT/SG2.5-4 2L2E	6020206005	RT/SG2.5-2L2E, RT/SG4-2L2E	PA	20
EP-RT/SF4-2L	6020207001	RT/SF4-2L, RT/SF4-2L-LD	PA	20

Partition (P)



These Accessories have been designed to separate different terminal block groups. These accessories have bigger surfaces than the terminals and in case of using cross-connection groups, they should be used as a separator to maintain the required clearance and creepage distance.

Type	Ordering No.	Application	Material	Qty.
P-RTP2.5	6020301005	RT/SU2.5	PA	100
P-RTP2.5H-10	6020301105	RT/SU2.5-H, RT/SU4, RT/SU6, RT/SU10	PA	50
P-DRTP4	6020302001	RT/SU4-2L	PA	20

Partition (P-RPIT2.5-10)



This partition is placed on the rail next to the RT/PG2.5-10 terminals and will increase the clearance and creepage distance between two groups of terminals with different voltage levels.

Type	Ordering No.	Application	Material	Qty.
P-RPIT2.5-10	6020307001	RPIT2.5, RPIT4, RPIT6, RPIT10, RPIT16, RPIT2.5-1/2, RPIT2.5-2/2	PA	100

Small Partition (SP)



Space-saving partitions can be post-fitted between cross-connections for terminal blocks.

Type	Ordering No.	Application	Material	Qty.
SP-2.5-10	6020304001	RT/SU2.5, RT/SU2.5-H, RT/SU4, RT/SU6, RT/SU10	PA	100
SP-D4	6020304004	RT/SU4-2L	PA	100

General Partition (GP)



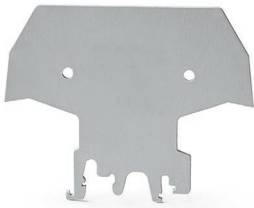
These types of partitions serve for RT/SU16-50.

Type	Ordering No.	Application	Material	Qty.
GP	60203050 	RT/SU16, RT/SU25, RT/SU35, RT/SU50, RT/SU2.5/4-2L, RT/SU2.5/4-2L-L, RT/SU4-2L, RT/SU4-3L, RT/PG2.5-2L, RT/PG2.53L0E5, RT/PG4-2L, RT/PG4-2LE	PA	20

Color
(Color Code is the last 2 digits
of the Ordering No.)



Cover Base (CB\1)



The Cover Base is used with a cover profile as protection from touching live parts of electrical components. This can be mounted on both TH-35 and G rail.

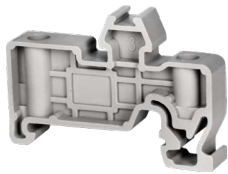
Type	Ordering No.	Material	Qty.
CB\1	6020802001	PA	10

End Brackets

End Brackets

These types of accessories are provided to keep tightly installed terminal blocks on the rail

EB/1



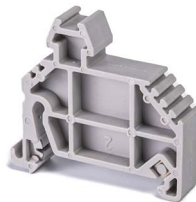
Ordering No.	Description	Qty.	Dimensions (W/H/L)(mm)	Material
6020101001	End bracket For mounting on TH35, adjustable with terminal NS marking	50	9.5 / 35 / 50.6	PA

EB/2



Ordering No.	Description	Qty.	Dimensions (W/H/L)(mm)	Material
6020101002	End bracket For mounting on G32 and TH35, adjustable with terminal NS marking	50	10 / 50 / 55.5	PA

EB/3

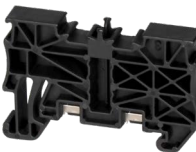


Ordering No.	Description	Qty.	Dimensions (W/H/L)(mm)	Material
60201010□□	End bracket For mounting on TH35, adjustable with terminal NS marking	50	10 / 42.8 / 45.6	PA

Color (Color
Code is the last
2 digits of the
Ordering No.)



EB/4



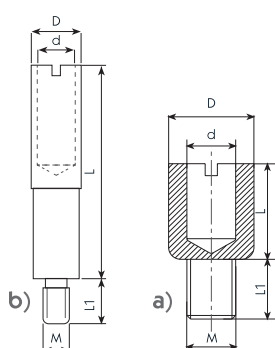
Ordering No.	Description	Qty.	Dimensions (W/H/L)(mm)	Material
60201010□□	End bracket For mounting on TH35, adjustable with terminal NS marking	50	8/41.8/53.5	PA/PC

Color (Color
Code is the last
2 digits of the
Ordering No.)



Test Accessories

Test Socket

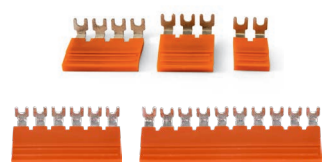
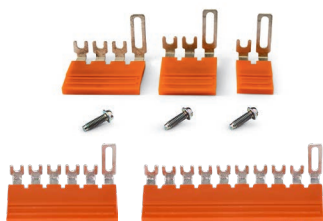


These types of accessories, are designed to give the possibility of current and voltage measurement in the electrical panel and are provided to keep tightly installed in the middle of terminal block busbar.

Type	Ordering No.	Drawing	L	L1	d	D	M	Application	Qty.
TS3/6/2.3	6020402001	a	6	3.5	2.3	4	3	RT/SU2.5, RT/SU4, RT/SU4-2L, RT/SU2.5-H, RT/SU4-3L, RT/SU2.5-3L0E5, RT/SU2.5/4-2L	50
TS3/8/4	6020402002	a	8	3.5	4	6	3	RT/SU10, RT/SU10 2L	50
TS3.5/8/4	6020402003	a	8	5	4	7	3.5	RT/SU16	50
TS4/8/4	6020402004	a	8	5	4	7	4	RT/SU25,35	50
TS6 Blue TS6 Yellow TS6 Gray TS6 Red TS6 Black TS6 Orange	6020401001 6020401004 6020401005 6020401006 6020401009 6020401010	b	26	4	4	5.5	3	RT/ST6, RT/ST6-L, RT/ST6-SHT, RT/ST6-SHT-L, RT/SU6	50

Moveable Cross Connection (Link)

The moveable link, which is made of brass and has a polyamide insulation body, permits the current branching for the terminal block, functioning as a cross-connection, which makes a connection, and thus installed, can be also disconnected. It is used in test disconnect terminal blocks.



Type	Ordering No.	Application	Qty.
ML2N	6020602001	RT/ST6, RT/ST6-L, RT/ST6-SHT, RT/ST6-SHT-L	50
ML3N	6020602002	RT/ST6, RT/ST6-L, RT/ST6-SHT, RT/ST6-SHT-L	50
ML4N	6020602003	RT/ST6, RT/ST6-L, RT/ST6-SHT, RT/ST6-SHT-L	50
ML6N	6020602004	RT/ST6, RT/ST6-L, RT/ST6-SHT, RT/ST6-SHT-L	10
ML10N	6020602005	RT/ST6, RT/ST6-L, RT/ST6-SHT, RT/ST6-SHT-L	10

Type	Ordering No.	Application	Qty.
L2	6020501001	RT/ST6-CMP	50
L3	6020501002	RT/ST6-CMP	50
L4	6020501003	RT/ST6-CMP	50
L6	6020501004	RT/ST6-CMP	10
L10	6020501005	RT/ST6-CMP	10

Cross-Connection



For the cross-connection bar, connection sleeves and screws are already captively mounted with the corresponding number of poles. The cross-connection then only requires inserting in the individual terminal row when fitting. The cross-connection unit is supplied in 2, 3 and 10 poles. Easy to cut the insulated body of terminal blocks with a nose plier or cutting tools to use rapidly jumping systems, is distinguished RAAD terminal blocks. This method can be used for types: RT/ST6, RT/ST6-SHT, RT/SU4-3L,...

Screw Cross-Connection Bar(CC)



To handle cross-connection of several terminal blocks, with the same potential, copper cross-connection bars are used. These cross-connection bars supplied in 2, 3 and 10 poles; and their length are equal to the individual terminal width. The cross-connection bar is electrically joined through a connection sleeve to the terminal block busbar.

The length of the brass connection sleeve is matched to the individual terminal. In order to be able to connect the cross-connection bar and the connection sleeve to a terminal block busbar, a brass screw is applied. The cross-connections are designed so that where a terminal does not need any cross-connection; it is possible to remove the screw and its sleeve, thus no cross-connection occurs in the terminal.

Type	Ordering No.	Max.Current (A)	Application	Qty.
CC10-2.5	6020502009	24	RT/SU2.5, RT/SU2.5-H, RT/SU2.5/4-2L RT/SU2.5-3L0E5	10
CC3-2.5	6020502002			50
CC2-2.5	6020502001			50
CC10-4	6020502109	32	RT/SU4	10
CC3-4	6020502102			50
CC2-4	6020502101			50
CC10-D4	6020503009	32	RT/SU4-2L, RT/SU4-3L	10
CC3-D4	6020503002			50
CC2-D4	6020503001			50
CC10-6	6020502209	41	RT/SU6, RT/ST6, RT/ST6-L, RT/ST6-SHT, RT/ST6-SHT-L, RT/ST6-CMP	10
CC3-6	6020502202			50
CC2-6	6020502201			50
CC10-10	6020502309	57	RT/SU10, RT/SU10-2L	10
CC3-10	6020502302			50
CC2-10	6020502301			50
CC10-16	6020502409	76	RT/SU16	10
CC3-16	6020502402			20
CC2-16	6020502401			20
CC10-25	6020502419	101	RT/SU25	10
CC3-25	6020502412			20
CC2-25	6020502411			20
CC10-35	6020502439	114*	RT/SU35	10
CC3-35	6020502432			20
CC2-35	6020502431			20
CC3-50	6020502452	132**	RT/SU50	10
CC2-50	6020502451			10
CC2-70	6020502472	132	RT/SU70	10
CC3-70	6020502471			10
CC3-95	6020502492	200***	RT/SU95	10
CC2-95	6020502491			10
CC2-150	6020502511	250	RT/SU150	10
CC3-150	6020502512			10

* In accordance with IEC/EN 60947-7-1, 124 A is recommended and in accordance with IEC/EN 60079-7, 114 A is recommended

** In accordance with IEC/EN 60947-7-1, 140 A is recommended and in accordance with IEC/EN 60079-7, 132 A is recommended

*** In accordance with IEC/EN 60947-7-1, 210 A is recommended and in accordance with IEC/EN 60079-7, 200A is recommended

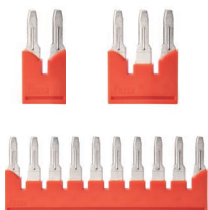
Bridge Comb (BC)



This type of cross connection is consisted of plastic (PA) and copper parts and meet the best connection between the same voltage level of various terminal blocks, needing no special tools. This type of cross-connection in 2, 3, 10 branches/poles are available based on request.

Type	Ordering No.	Max.Current (A)	Application	Qty.
BC 10-2.5	6020504009	24	RT/SU2.5, RT/SU2.5-H, RT/SU2.5-2L, RT/SU2.5-2L-L, RT/SK2.5, RT/SK2.5-R, RT/SK2.5-D, RT/SK2.5-F, RT/SK2.5-FLD, RT/SU2.5-3L0E5	10
BC 3-2.5	6020504002			50
BC 2-2.5	6020504001			50
BC10-4	6020504109	32	RT/SU4, RT/SU4-2L, RT/SU4-3L, RT/SG4, RT/SG4-2L	10
BC3-4	6020504102			50
BC2-4	6020504101			50
JEB10-6	6020506009	41	RT/SU6, RT/ST6, RT/ST6-L, RT/ST6-SHT, RT/ST6-SHT-L, RSTP6, RT/ST6-CMP, RT/SF4, RT/SF4-LD, RT/SG6, RT/SF4-2L, RT/SF4-2L-LD	10
JEB3-6	6020506002			50
JEB2-6	6020506001			50

Bridge Screwless (BS)



Confidence in connection attained by using copper for metal parts of BS. This type of jumpers can be used for RAAD screwless terminal block types: RT/PG.

Type	Ordering No.	Max.Current (A)	Application	Qty.
BS 10-2.5	6020505009	20*	RT/PG2.5, RT/PG2.5 - 2L, RT/PG2.5-3L0E5, RT/PG2.5 - 1/2, RT/PG2.5 - 2/2, RT/SG2.5, RT/SG2.5-2L	10
BS 3-2.5	6020505002			50
BS 2-2.5	6020505001			50
BS 10-4	6020505109	26**	RT/PG4, RT/PG4-2L, RT/SG4, RT/SG4-2L	10
BS 3-4	6020505102			50
BS 2-4	6020505101			50
BS 10-6	6020505209	41	RT/PG6, RT/SG6, RT/SF4-2L, RT/SF4-2L-LD	10
BS 3-6	6020505203			50
BS 2-6	6020505201			50
BS 3-10	6020505302	57	RT/PG10, RT/SG10	10
BS 2-10	6020505301			10
BS 2-16	6020505401	76	RT/PG16	10

* In accordance with IEC/EN 60947-7-1, 24 A is recommended and in accordance with IEC/EN 60079-7, 20A is recommended.

** In accordance with IEC/EN 60947-7-1, 32 A is recommended and in accordance with IEC/EN 60079-7, 26A is recommended.